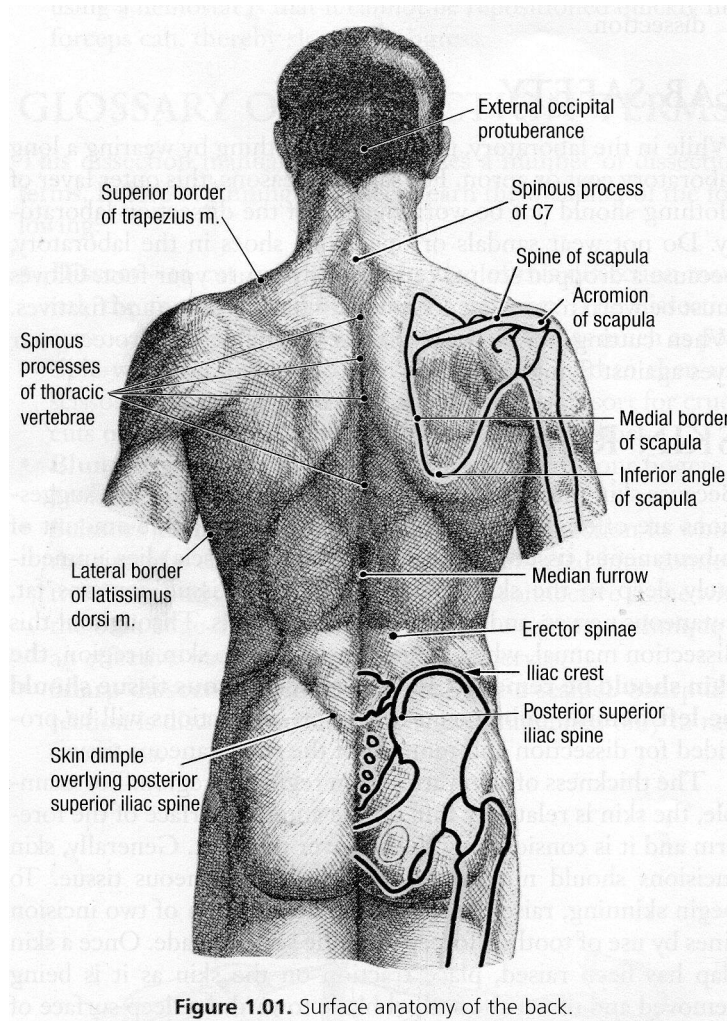


Surface Anatomy and Boundaries



Skeleton of the Back - Overview

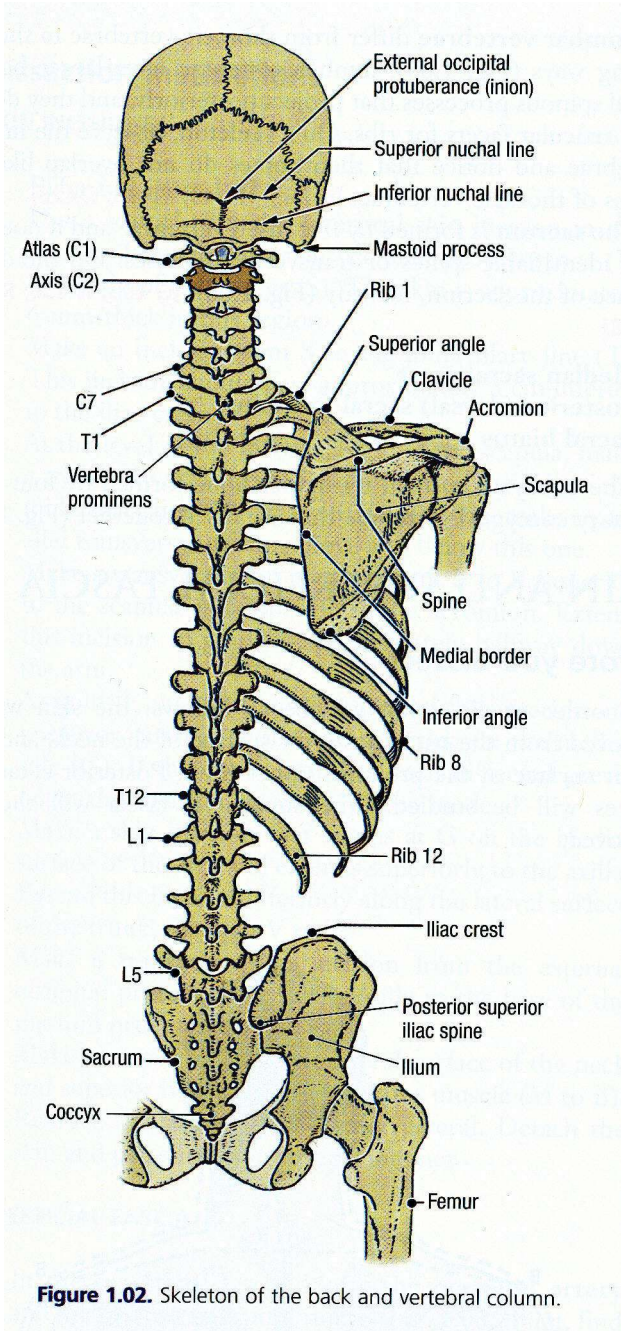


Figure 1.02. Skeleton of the back and vertebral column.

Skeleton of the Back – Cervical Region

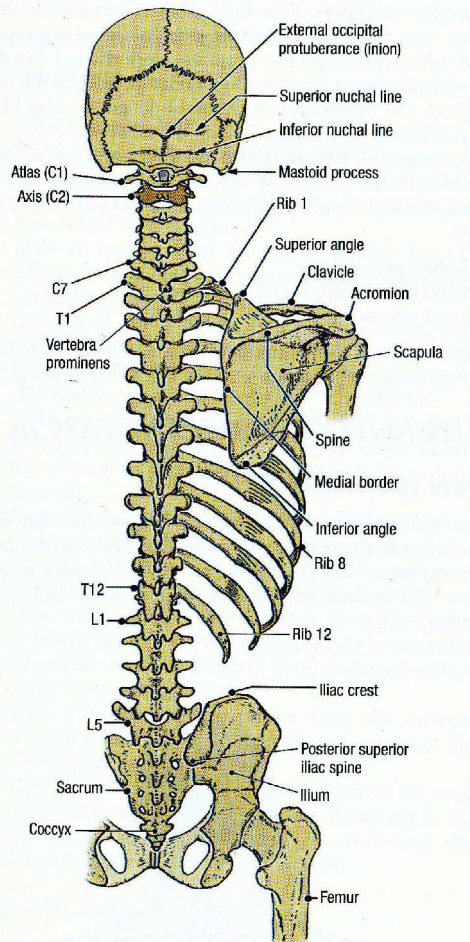


Figure 1.02 Skeleton of the back and vertebral column.

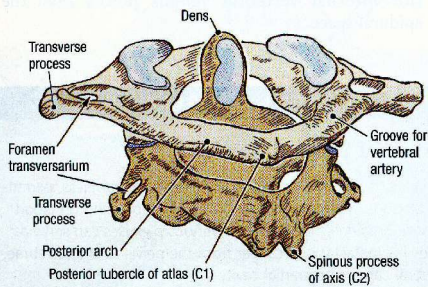


Figure 1.11. Features of the atlas (C1) and axis (C2).

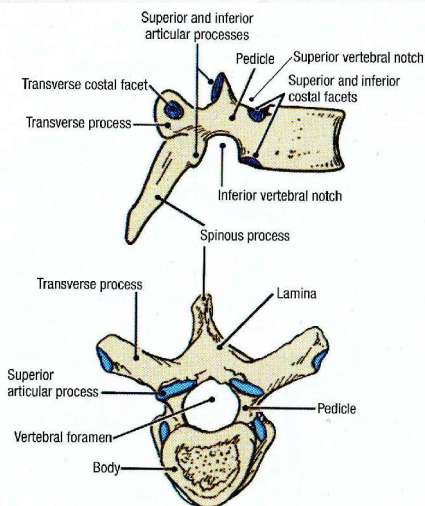


Figure 1.03. Typical thoracic vertebra in lateral and superior view.

Greater Occipital Nerve and Artery

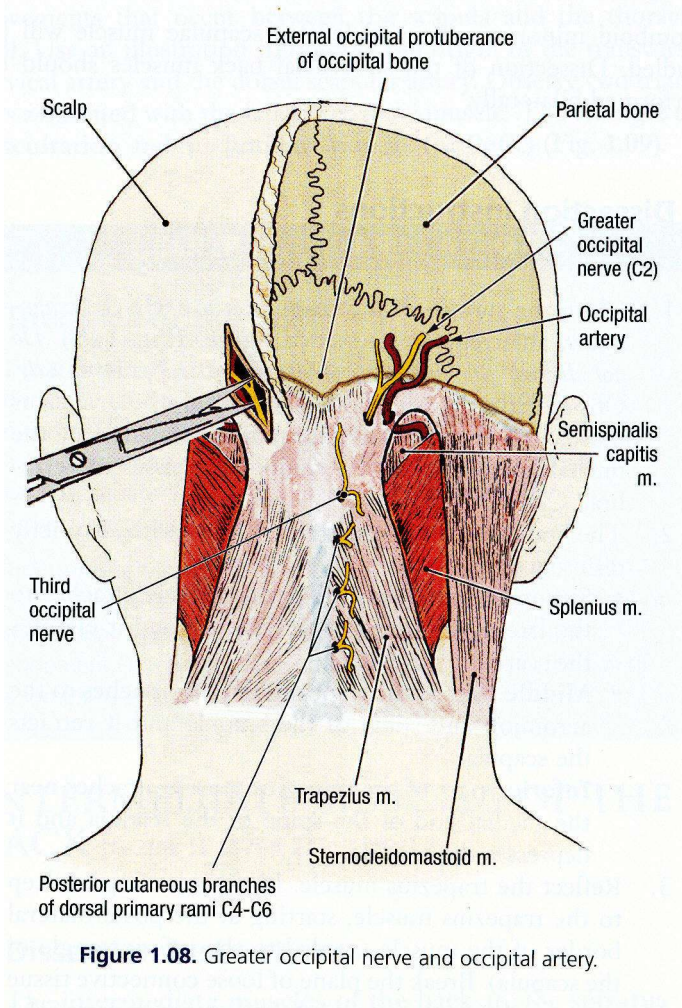
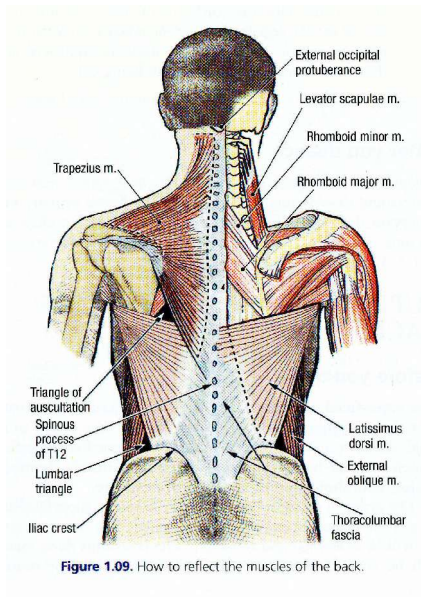
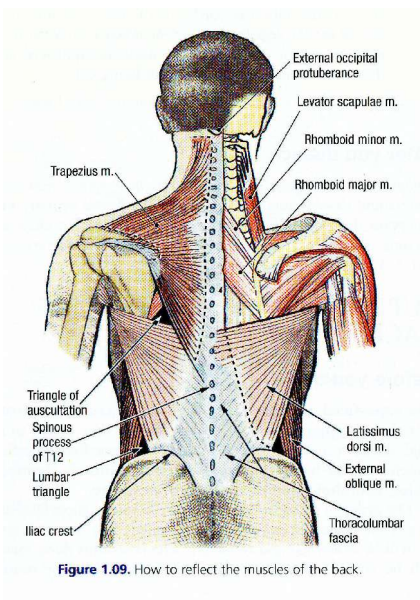


Figure 1.08. Greater occipital nerve and occipital artery.

Superficial Muscles of the Back – Trapezius and Latissimus Dorsi



Superficial Muscles of the Back – Rhomboids and Levator Scapulae



Rotation of the Scapula

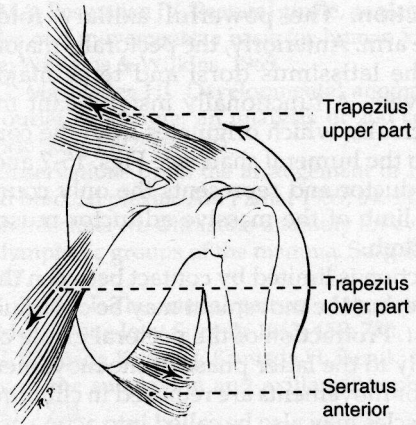
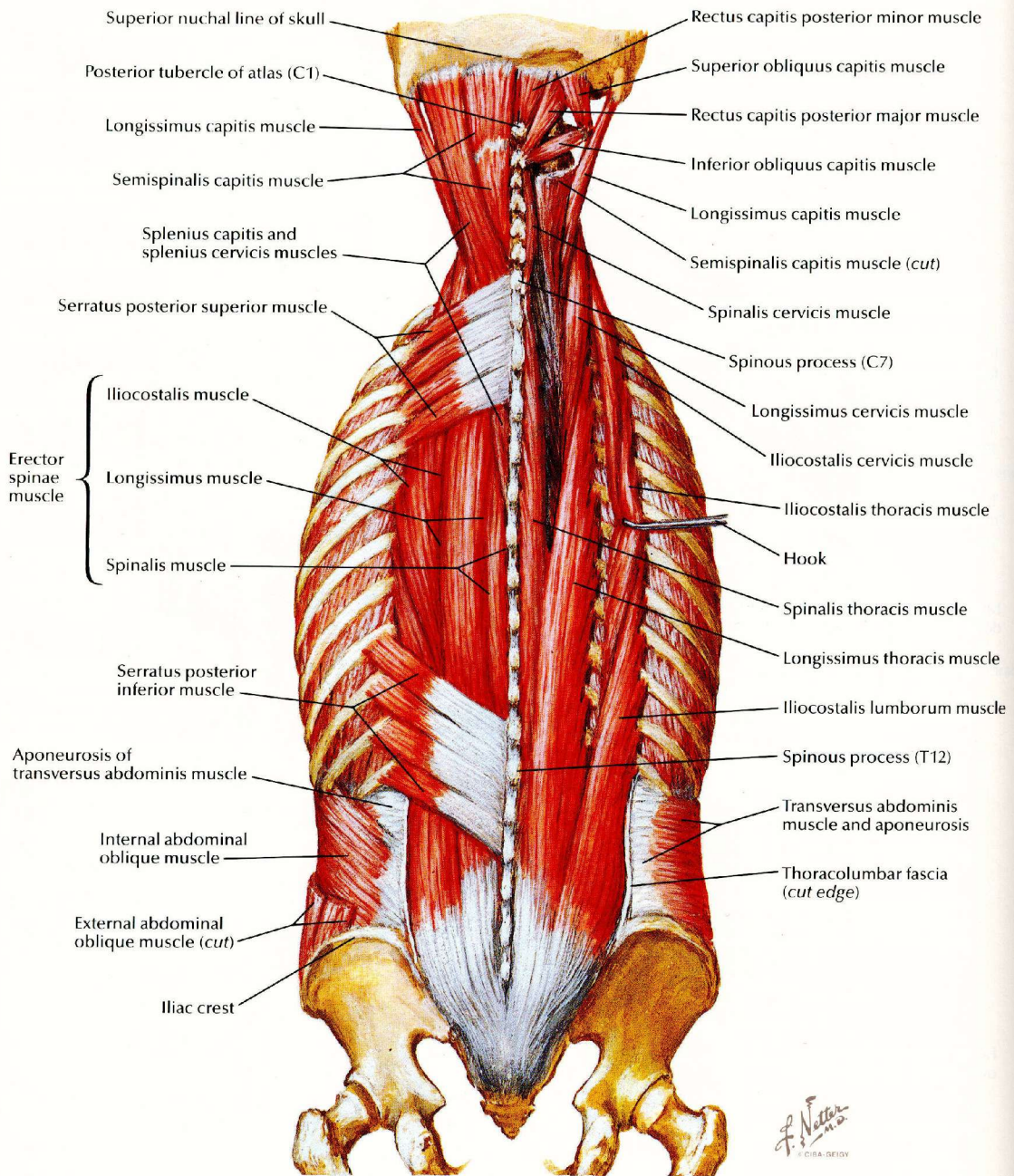
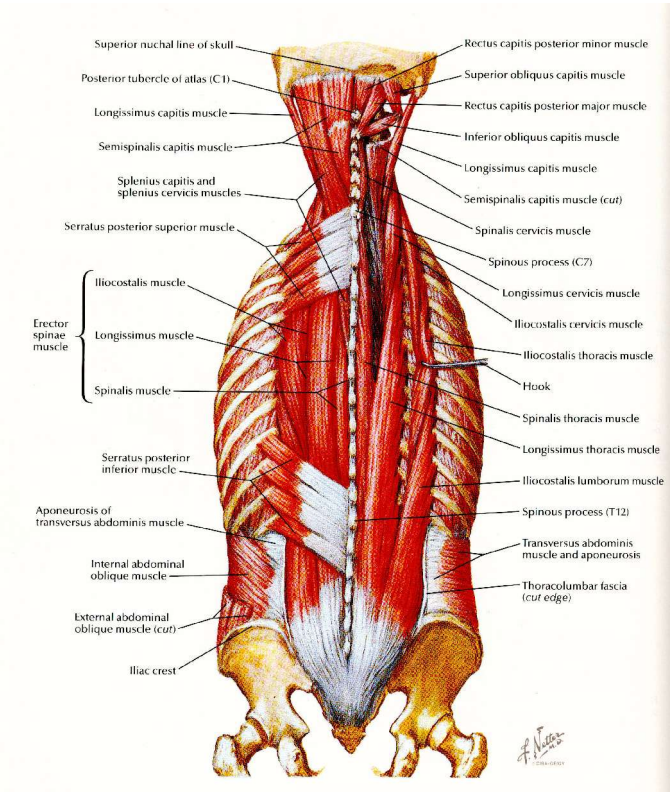


FIGURE 15-36.
The muscles that rotate the scapula upward during abduction of the arm.

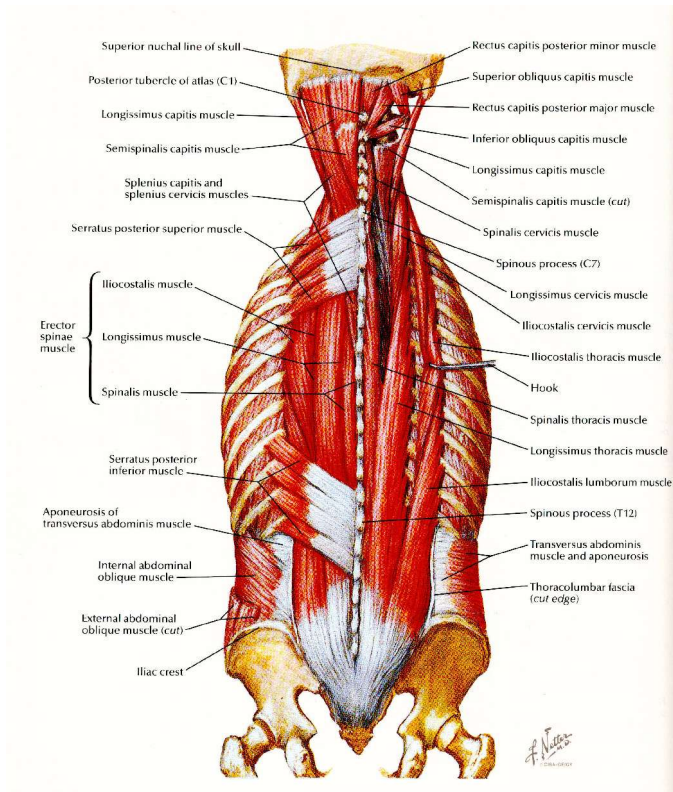
Intermediate and Deep Muscles of the Back – Serratus Posterior Superior and Serratus Posterior Inferior



Deep Muscles of the Back – Cervical Region



Deep Muscles of the Back – Thoracic Region



Deep Muscles of the Back – Transversospinal Group

